



SETON EDUCATION PARTNERS

Seton Blended Learning Network: 2014-2015 Results



The fourth year of the Seton Blended Learning Initiative was wildly successful. Seton expanded its pioneering blended learning model to three new schools and two new geographies (Cincinnati and Milwaukee) while continuing to support blended learning pioneers Mission Dolores Academy (San Francisco), Saint Anne School (Los Angeles), and DePaul Catholic (Philadelphia). **In 2014-2015 Seton Education Partners tripled the number of scholars we serve in our Blended Learning Initiative, growing into a six-school, five-city network serving 1,500 students.**

Rapid growth did not slow innovation. Seton helped St. Joseph Catholic School and Nativity Jesuit Academy become not only the first robust blended learning Catholic schools in the states of Ohio and Wisconsin, but some of the first in the entire Midwest. Seton was also proud to partner with the Archdiocese of Los Angeles to bring St. Gertrude the Great into the network. Between the blended learning efforts of Seton and the Archdiocese, Los Angeles became the American city with the most robust local network of blended learning Catholic schools. Finally, Seton expanded its model from grades K-2 to grades K-5 at Philadelphia's DePaul Catholic, serving a total of 290 students at that school.

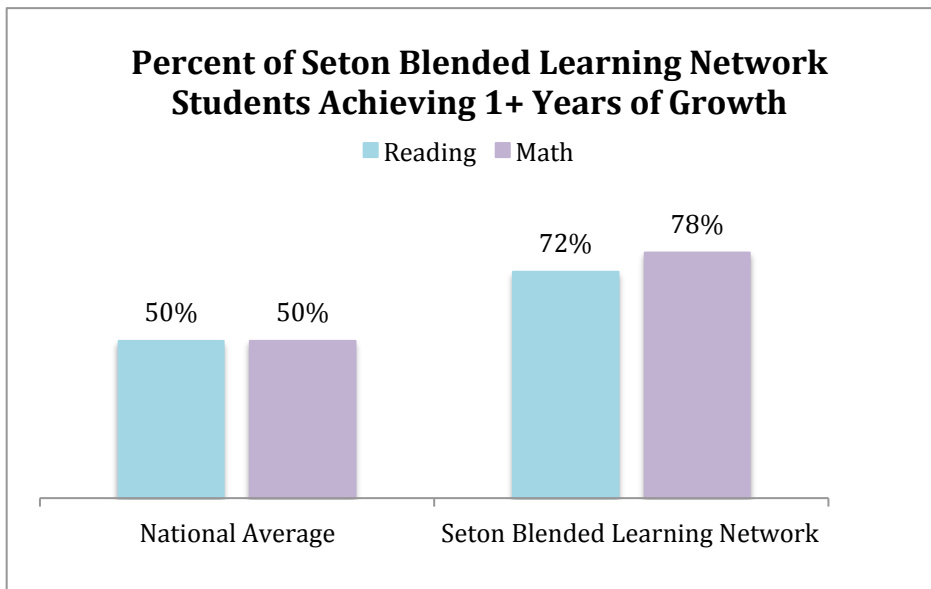
Seton investors brought roughly \$3 million in computer hardware, the most advanced educational software, and on-the-ground expertise to create an instructional environment that provides individualized learning for students in core academic subjects. During classes, half of the students received personalized instruction on computers while the other half engaged in small group instruction with their teacher. Teachers also used data obtained through students' computer work to identify areas of need and better target instruction.

Seton worked with each school’s leadership team to inject best practices from high performing, “no excuses” urban schools in order to help build a culture in which scholars develop the knowledge, skills, and character necessary to earn a college degree and pursue lives of value, faith, and integrity. Propelled by these changes and the Seton Blended Learning Network’s proven results, the schools significantly increased enrollment and reduced per-pupil operating costs.



1. How did student academic growth compare to the national average?

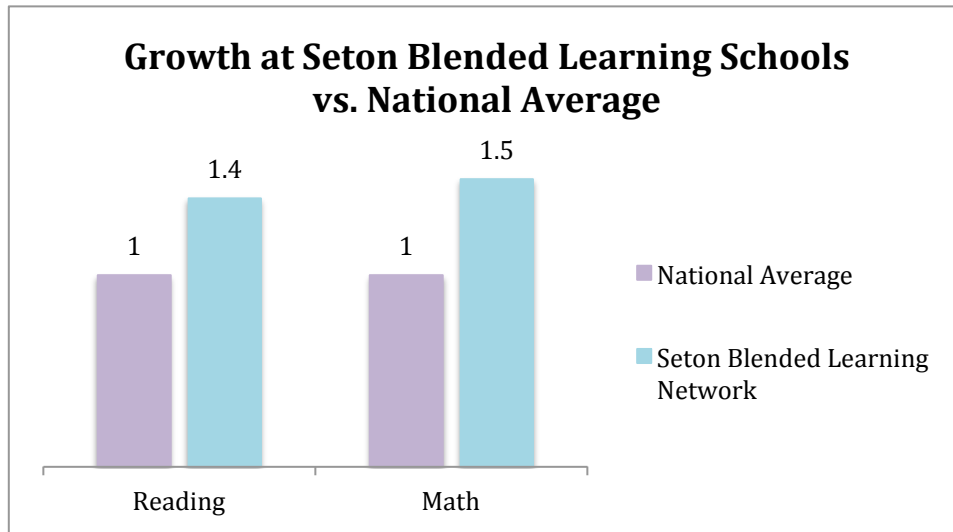
In our fifth year, students in Seton’s Blended Learning Network continued to make tremendous academic gains.



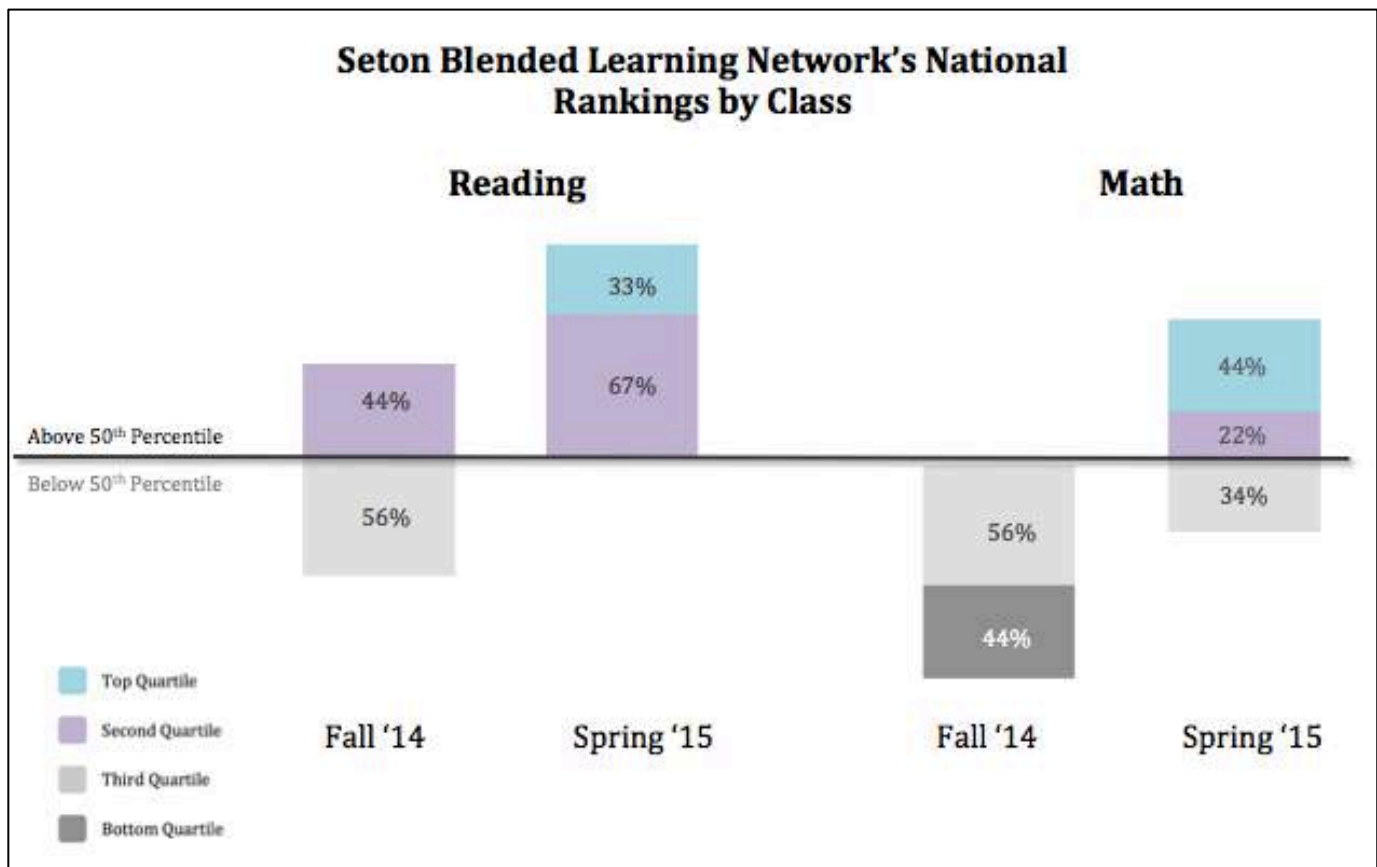
Collectively, 98% of students at Seton’s six blended learning schools are minorities, and over two-thirds qualify for the federal free or reduced-price lunch program. Students take the nationally normed Northwest Evaluation Association Measures of Academic Progress (NWEA MAP) assessment which allows schools to compare student growth to grade-level peers across state lines. NWEA MAP monitors student growth in the fall, winter, and spring. According to NWEA, only 50% of students meet their individual growth targets. **This year, 78% of Seton Blended Learning Network scholars made one or more years of progress in math while 72% made one or more years of progress in reading.** These growth results are on par with or outpace that of many high-performing charter networks.

2. Is this more growth than individual students would typically achieve? Yes.

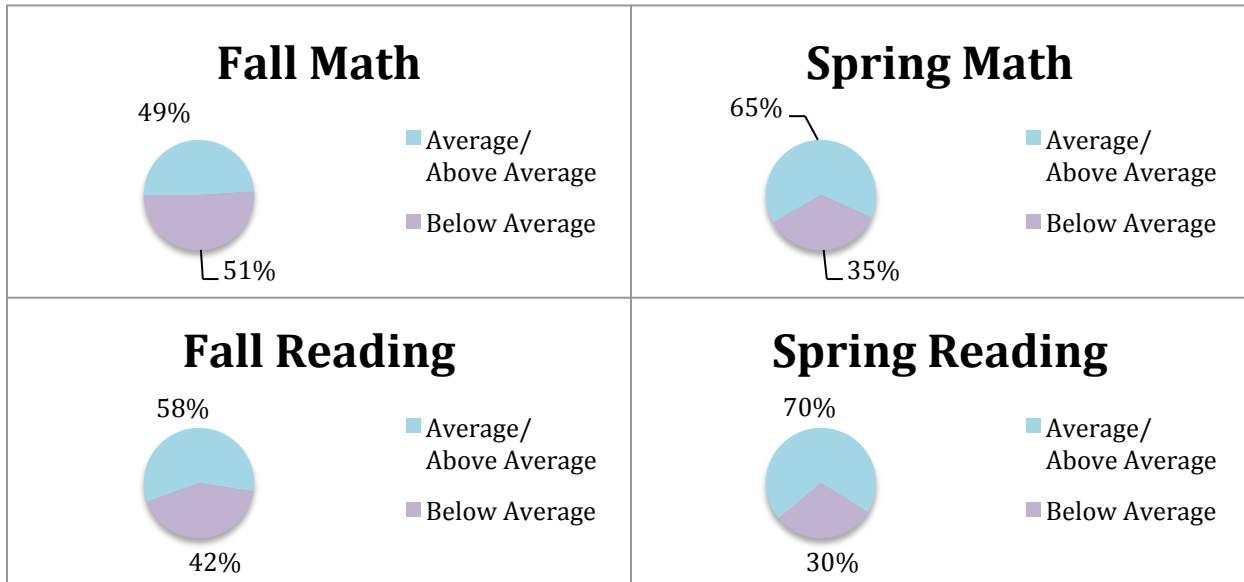
Schools should be expected to deliver one year of academic progress for each year a student is in school. On a nationally normed test, only 50% of students will meet this goal. Seton Blended Learning scholars often come from challenging backgrounds and arrive at school behind their more affluent peers; one year of growth simply isn't enough to get them ready for college. **Our scholars are growing 1.5 times faster than the national average in math and 1.4 times faster in reading.** This accelerated growth helps eliminate the achievement gap between them and their more affluent peers.



3. Did national percentile rankings improve? Yes.



4. Are more students performing at grade level? Yes.



5. Has enrollment improved? Yes.

Seton Blended Learning Network schools have collectively increased enrollment 30% from pre-Seton totals. Partner schools are not only more financially sustainable, but they’re providing more low-income students with access to high-quality faith-based education.

School	Pre-Seton	2014-2015
Mission Dolores (San Francisco)	220	255
Saint Anne (Los Angeles)	220	265
DePaul Catholic (Philadelphia)	282	424
St. Joseph (Cincinnati)	202	265
Nativity Jesuit (Milwaukee)	80	108
St. Gertrude the Great (Los Angeles)	143	176
Total:	1,147	1,493
Percent Increase:	30%	



6. What's next for the Seton Blended Learning Network?

In 2015-2016, two new schools will join the Seton Blended Learning Network—Resurrection Catholic School in East Los Angeles and St. Rita's Catholic School in New Orleans. These schools were selected from a national search that produced more than double the applications of Seton's initial expansion efforts. In addition, Philadelphia's DePaul Catholic will become fully blended next year after seeing its K-2 and 3-5 grade levels achieve successful launches. Upon adding the middle school program, this two-class per grade school will become the largest robust blended learning Catholic school in the country. Finally, Seton will help Milwaukee's Nativity Jesuit Academy welcome its first kindergarten class and begin the journey towards becoming a high-performing, co-ed K-8 school after spending over twenty years as an all boys middle school. **With these additions, the Seton Blended Learning Network will serve roughly 2,300 students across eight schools in six cities nationwide.**

Each school implementing Seton's model will have full-time, on-the-ground experts supporting teachers in the areas of blended learning best practices, data analysis, and school culture. All of Seton's blended learning managers are talented, experienced urban educators, a majority having completed service through Teach For America or the University of Notre Dame's Alliance for Catholic Education Program. New Seton blended learning schools will collaborate with existing network members via Seton's nationwide professional development model that relentlessly pursues ways to better serve both students and teachers. Seton is excited to welcome these schools, children, families, and staff members to the Seton Blended Learning Network family.

Seton Blended Learning Director Jeff Kerscher shares his excitement. "Catholic schools have a rich tradition of serving low-income families and Seton is excited to strengthen that tradition. While our academic results are incredible, we are most proud that our schools offer individualized instruction paired with robust character education in a faith-based setting. Every day at partner schools, scholars experience a cutting-edge model while learning what it means to achieve excellence and model Christ in their communities. That is a combination you cannot get anywhere else."

Seton is currently accepting applications to expand its blended learning initiative in 2016-2017. To learn more about the Seton Blended Learning Network, and how your school or diocese can join, please contact Jeff Kerscher at jeff@SetonPartners.org or visit us on-line at www.SetonPartners.org.

